



Macao and overseas philatelic products on sale at *ShopThruPost* from 16 December 2021

Selected philatelic products issued by Macao Post and Telecommunications and other overseas postal administrations of Australia, Canada, Japan, Liechtenstein and New Zealand will be **put on sale on the Hongkong Post's Online Shopping Mall – “ShopThruPost”** (shopthrupost.hongkongpost.hk) starting from 8 am of 16 December 2021.

Every year, postal administrations around the world issue Christmas stamps which come in different shapes and forms to ring in the festivities with well wishes. Deviated from depicting the Christian Christmas theme, Canada Post creates fun to the design of festive stamps by showcasing the portraits of three classic Christmas characters – Santa Claus, reindeer and elf. Continuing the tradition of issuing the Christmas Island Christmas stamp series, Australia Post's new issue features Santa Claus interacting with various personified island fauna, and taking a well-deserved break after delivering presents and enjoying the wonderful snorkelling opportunities at the island's warm waters.

Australia Post: Christmas 2021



Stamp Sheetlet (AU516)
\$25.00

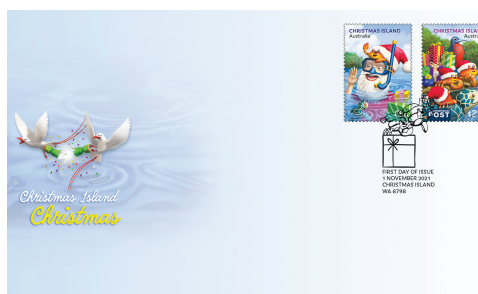


Serviced First Day Cover with Stamp Set (AU517)
\$50.00

Christmas Island Christmas 2021



Stamp Sheetlet (AU518)
\$25.00



Serviced First Day Cover with Stamp Set (AU519)
\$25.00

(27_Eng/2021 – 15/12)¹

PHILATELIC LINK

Canada Post:

Holiday Portraits

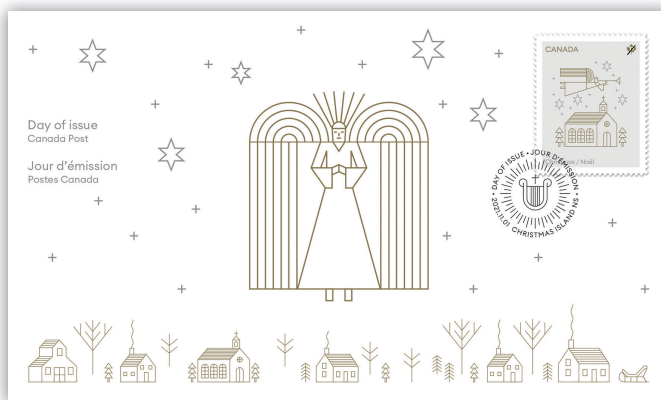


Souvenir Sheet (CA280)
\$40.00



Served First Day Cover with Souvenir Sheet (CA281)
\$45.00

Christmas (2021), Angels



Served First Day Cover with Stamp (CA282)
\$15.00

Liechtensteinische Post AG:

Christmas Stamps 2021



Served First Day Cover with Stamp Set (LI163)
\$70.00

PHILATELIC LINK

New Zealand Post:

Christmas 2021



Souvenir Sheet (NZ332)
\$80.00



Serviced First Day Cover with Stamp Set (NZ333)
\$85.00

Anime enthusiasts have a collectible to look forward to – the souvenir sheet of “Demon Slayer: Kimetsu no Yaiba – The Movie: Mugen Train” issued by Japan Post. The smash-hit Japanese manga series has swept across the world with its captivating storyline and top-notch visuals. The souvenir sheet contains 15 self-adhesive stamps featuring the scenes and set from the animated movie as well as the main characters. By scanning the QR code printed on the souvenir sheet during the period between 6 December 2021 and 31 March 2022, collectors will hear the voices of Tanjiro and other characters. The selling stock of the souvenir sheet is 2,500 sheets. A maximum of two souvenir sheets can be purchased in each transaction on a first-come, first-served basis while stocks last.

Japan Post:

Demon Slayer: Kimetsu no Yaiba – The Movie: Mugen Train



Souvenir Sheet (Seal Type) (JP008)
\$110.00

PHILATELIC LINK

Other philatelic products include:

Macao Post and Telecommunications: 150th Anniversary of Kiang Wu Hospital Charitable Association



Set of 4 Stamps (MA688)
\$20.00



Stamp Sheetlet (MA689)
\$20.00

20th Anniversary of the Establishment of the Unitary Police Service



Set of 4 Stamps (MA690)
\$20.00



Stamp Sheetlet (MA691)
\$20.00

20th Anniversary of the Establishment of the Macao Customs Service



Set of 4 Stamps (MA692)
\$20.00



Stamp Sheetlet (MA693)
\$20.00

PHILATELIC LINK

Museums and their Collections VI – Macao Grand Prix Museum



Set of 4 Stamps (MA694)
\$20.00



Stamp Sheetlet (MA695)
\$20.00

40th Macao International Marathon



Set of 2 Stamps (MA696)
\$10.00



Stamp Sheetlet (MA697)
\$20.00

Details and selling prices of the philatelic products as well as the sales quota are as follows:

Issue	Product and Product Code	Unit Price (HK\$)	Maximum Purchase Quantity	Stock Availability
Macao Post and Telecommunications				
150th Anniversary of Kiang Wu Hospital Charitable Association	Kiang Wu Hospital Charitable Association (referred to as Kiang Wu Charitable Association) is one of the large-scale non-governmental charities in Macao. Founded in 1871, with a long history spanning over three centuries, Kiang Wu Charitable Association is now celebrating its 150th anniversary. The Association aims at boosting charity, providing medical services, developing education and benefiting the residents.			
	Set of 4 Stamps (MA688)	20.00	5 sets	700 sets
	Stamp Sheetlet (MA689)	20.00	5 sheets	700 sheets
20th Anniversary of the Establishment of the Unitary Police Service	29 October 2021 marks the 20th Anniversary of the Establishment of the Unitary Police Service; a stamp issue is launched to commemorate its development. Over the past two decades, all members of the Unitary Police Service have worked together to fulfil their duties and maintain Macao's social order; have well prepared themselves to develop a new policing model; keep up with times by employing technology to strengthen policing; and join hands with different sectors and the general public in contribution to civil protection tasks.			
	Set of 4 Stamps (MA690)	20.00	5 sets	200 sets
	Stamp Sheetlet (MA691)	20.00	5 sheets	200 sheets

PHILATELIC LINK

Issue	Product and Product Code	Unit Price (HK\$)	Maximum Purchase Quantity	Stock Availability
Macao Post and Telecommunications				
20th Anniversary of the Establishment of the Macao Customs Service	The Third Plenary Session of the Preparatory Committee for the Macao Special Administrative Region of the National People's Congress of 19 September 1998 stipulated that after the Establishment of the Macao Special Administrative Region, the Macao Customs Service would be set up in accordance with the Basic Law. In compliance with Article 2/1999 of the Law on Government Organization Outline, the Customs Service of the Macao Special Administrative Region of the People's Republic of China was set up and officially operated on 1 November 2001.			
	Set of 4 Stamps (MA692)	20.00	5 sets	200 sets
	Stamp Sheetlet (MA693)	20.00	5 sheets	200 sheets
Museums and their Collections VI – Macao Grand Prix Museum	Macao Grand Prix Museum was inaugurated on 18 November 1993 to commemorate the 40th anniversary of the Macao Grand Prix. Afterwards, the Museum underwent a series of renovation in 2003 for the 50th anniversary of the Macao Grand Prix. In 2016, Macao Government Tourism Office decided to reform the Tourism Activities Centre into the new Macao Grand Prix Museum in order to achieve the goal of developing diversified tourism products. The overall expansion works were completed in 2020. After expansion, the Macao Grand Prix Museum has a total floor area of approximately 16,000 square metres, which is six times larger than the old Museum. The four-storey Museum provides visitors with Macao Grand Prix - related knowledge, entertainment, leisure and learning elements.			
	Set of 4 Stamps (MA694)	20.00	5 sets	800 sets
	Stamp Sheetlet (MA695)	20.00	5 sheets	800 sheets
40th Macao International Marathon	The 40th Macao International Marathon will be held on 5 December 2021, comprising three races, including the Marathon (42.195 km), the Half Marathon (21.0975 km) and the Mini Marathon (approx. 4.5 km). In order to allow more long-distance runners to participate in this event, the quotas for the races have been increased to 12,000 in recent years. Along the route of the race courses, there are Macao's distinctive buildings, world heritage sites and sea-crossing bridges. The closed race courses provide safe racing conditions for participants and let them achieve the best performance.			
	Set of 2 Stamps (MA696)	10.00	5 sets	800 sets
	Stamp Sheetlet (MA697)	20.00	5 sheets	800 sheets
Australia Post				
Christmas 2021	The two traditional Christmas stamps present religious artworks featuring the Madonna and Child. The artworks were made from terracotta clay and glazed in a technique first introduced in Renaissance Italy by the Florentine della Robbia family of artists. The other three stamps in this issue are secular in theme, highlighting the custom of celebrating Christmas with sugary gingerbread treats – a tradition with a very long history, with various recipes recorded in Europe for more than a millennium.			
	Stamp Sheetlet (AU516)	25.00	5 sheets	300 sheets
	Serviced First Day Cover with Stamp Set (AU517)	50.00	5 covers	200 covers
Christmas Island Christmas 2021	Illustrated by Andrew McIntosh, this issue shows Santa taking a well-earned break after delivering presents to enjoy the wonderful snorkelling opportunities afforded by Christmas Island's warm waters.			
	Stamp Sheetlet (AU518)	25.00	5 sheets	450 sheets
	Serviced First Day Cover with Stamp Set (AU519)	25.00	5 covers	200 covers

PHILATELIC LINK

Issue	Product and Product Code	Unit Price (HK\$)	Maximum Purchase Quantity	Stock Availability
Canada Post				
Holiday Portraits	Designed by Larry Burke and Anna Stredulinsky of Burke & Burke, and illustrated by Geneviève Godbout, this issue features adorable, full-of-personality portraits of three classic holiday characters, including Santa, a reindeer and an elf.			
	Souvenir Sheet (CA280)	40.00	5 sheets	400 sheets
	Serviced First Day Cover with Souvenir Sheet (CA281)	45.00	5 covers	200 covers
Christmas (2021), Angels	2021 heavenly Christmas issue is inspired by the angels who played an essential role as messengers in the Nativity story. Designed by Stéphane Huot and illustrated by Luc Melanson, the simple line drawings in gold and silver on a crisp white background call up a sense of purity and peace.			
	Serviced First Day Cover with Stamp (CA282)	15.00	5 covers	200 covers
Japan Post				
Demon Slayer: Kimetsu no Yaiba – The Movie: Mugen Train	The souvenir sheet is themed on the scenes and characters from Demon Slayer: Kimetsu no Yaiba – The Movie: Mugen Train and contains a set of 15 stamps. By scanning the QR code printed on the upper left corner of the souvenir sheet during the period between 6 December 2021 to 31 March 2022, collectors will hear the voices of Tanjiro and other characters.			
	Souvenir Sheet (Seal Type) (JP008)	110.00	2 sheets	2,500 sheets
Liechtensteinische Post AG				
Christmas Stamps 2021	The traditional and popular Christmas stamps are presented in oriental style this year, which is reflected in the choice of colours and detailing in gold. The four square special stamps present a connection to the Christmas story of Christianity.			
	Serviced First Day Cover with Stamp Set (LI163)	70.00	2 covers	100 covers
New Zealand Post				
Christmas 2021	With a contemporary approach to the Nativity story, the Christmas stamps for 2021 feature colour-blocked gradients that evoke stained glass windows. Simple forms, shapes and profiles in both the characters and the landscapes they occupy bring the meaning of each character and the warmth and connection of Christmas to life.			
	Souvenir Sheet (NZ332)	80.00	5 sheets	249 sheets
	Serviced First Day Cover with Stamp Set (NZ333)	85.00	2 covers	200 covers

- Remarks:
1. The philatelic products as shown above are available for sale for six months while stocks last, subject to the advertised maximum purchase quantity.
 2. Sales arrangements, selling price and sales quota set out in “Philatelic Link” are subject to change without prior notice.
 3. All images are for reference only.
 4. Stamps products should be kept in cool and dry places and avoid placing them under direct sunlight or in hot environment.
 5. The market value of stamp products can go down as well as up. Please consider your needs before placing any orders.

Extension of iPostal Kiosk Network

The self-service iPostal Kiosks were commenced in July this year, which offer automated posting services, purchase of postage labels, and postage enquiry. With effect from 17 December 2021 (Friday), the network of iPostal Kiosks will be extended to cover the following locations as detailed below:-

Location	Address	Rollout Time	Operating Hours
Tsat Tsz Mui Post Office	Shops 1, 6, 7 & 11, G/F, Block C, Model Housing Estate, 770 King's Road, North Point	9:30 am	<u>Mondays to Sundays:</u> 24 hours
Wan Chai Post Office	2/F, Wu Chung House, 197-213 Queen's Road East, Wan Chai	9:30 am	<u>Mondays to Fridays:</u> 07:00 – 20:00 <u>Saturdays:</u> 07:00 – 18:30 <u>Sundays:</u> 14:00 – 18:00
Hoi Lai Shopping Centre	Opposite to Shop No. 20, G/F, Hoi Lai Shopping Centre, Hoi Lai Estate, Sham Shui Po	9:30 am	<u>Mondays to Sundays:</u> 06:00 – 00:00

For further enquiries, please contact the Hongkong Post enquiry hotline at 2921 2222.



**Special Arrangements for Stamp Affixing /Datestamping Services
for Self-designed Souvenir Covers
(Date of Postmark: 1 January 2022)**

Customers can apply for our Stamp Affixing/Datestamping Services for Self-designed Souvenir Covers to obtain the Philatelic Bureau pictorial postmark of 1 January 2022 on their self-provided covers **from now until 31 December 2021**.



Specimen of Postmark (for reference only)

Application forms of the service are obtainable at all post offices (except mobile post offices), the Philatelic Bureau Counter located at 1/F General Post Office, 2 Connaught Place, Central, Hong Kong and this web link https://stamps.hongkongpost.hk/form/stamp_affixing_e_20211209.pdf

Details of the handling charges are given below:-

- For self-provided covers with postage stamps affixed, the charge for datestamping service is \$1.0 per cover;*
- For self-provided covers without postage stamps affixed, the charge for stamp affixing and datestamping is \$2.5 per cover (postage not included).*

* The maximum size limits of the self-provided covers: Length 245 mm; Width: 165 mm; Thickness: 5 mm.

Completed application form together with the self-provided covers shall be submitted to the Philatelic Bureau Counter on or before 31 December 2021. Philatelic Bureau will notify customers of the collection date separately.

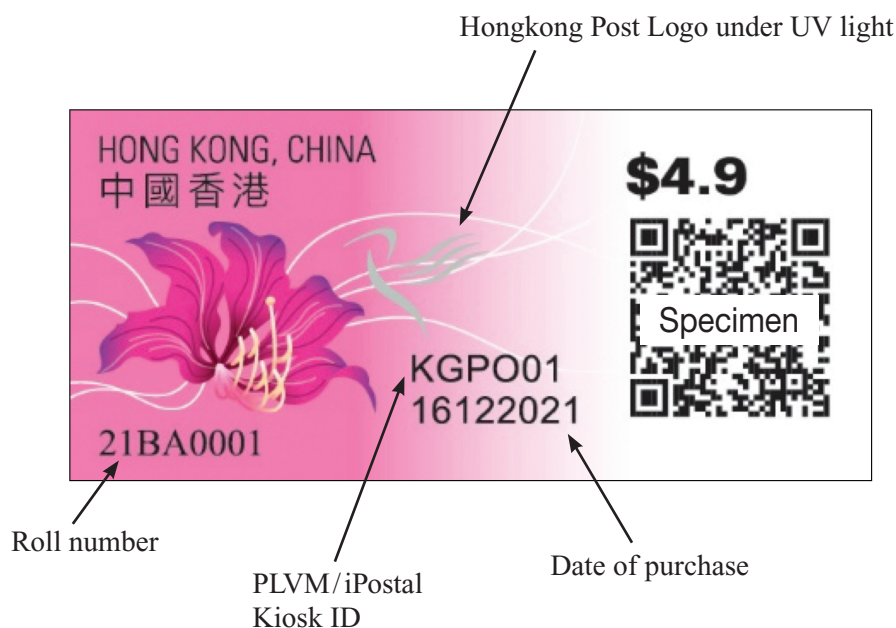
For enquiries, please call 2928 7221 or 2928 7185.

New Design of Postage Label (Pos 9B)

A newly designed postage label (Pos 9B) will be rolled out to replace the existing design with effect from **23 December 2021, Thursday**. The new label is designed by Mr CHENG Kar-wai on the theme of *Bauhinia x blakeana*, the city flower of the Hong Kong Special Administrative Region. The label is printed in digital printing by Australia Post.

Same as the existing Pos9B, the new designed postage label will be pre-printed with “中國香港 HONG KONG, CHINA”, 8 digits postage label roll number and an ultraviolet printed Hongkong Post logo, in addition to the colourful new design. All operation procedures concerning mail items affixed with this new designed Pos9B remain unchanged.

An image of the specimen postage label is reproduced below:



Specimen of Postage Label (for reference only)

Follow   郵票 · 郵趣@Hongkong Post Stamps and stay tuned with the latest philatelic news!

Subscribe to Receive the Latest Philatelic Link

Want to receive as soon as possible the latest information about new stamp products and services? Please visit Hongkong Post Stamps website
<http://stamps.hongkongpost.hk/stamp/detail2/9b31bab9-2864-4c93-87ba-186dda7c0f4a>
or scan the QR code and subscribe to receive the e-copy of Philatelic Link.

