

Special Stamp Issue — “Local Snacks in Hong Kong”



Mint Stamps

A set of special stamps on “Local Snacks in Hong Kong”, with associated philatelic products, will be released for sale on **22 April 2021 (Thursday)**.

Hong Kong offers worldwide delicacies for foodies to savour. But to get a real taste of the food culture of the city, it is a requisite to try the wide variety of local snacks. At first, local snacks in Hong Kong were sold mainly by food hawkers on the streets. With rapid changes and social development, the “push-cart stalls” manned by hawkers have gradually been replaced by small catering outlets. Hongkong Post issues a set of six stamps and a stamp sheetlet under the theme of “Local Snacks in Hong Kong”, featuring some of the appetising favourites such as fishballs, candy and coconut wrap, stuffed three treasures, buttered pineapple bun, stewed skewers, peanut candy, steamed rice rolls, etc. in the design. The stamps and stamp sheetlet are specially produced with the embossing technique creating a stunningly three-dimensional effect for the snacks, as if putting them close at hand, feasting our eyes on a veritable banquet of local delicacies!

Sales Arrangements

Official First Day Covers will be put on sale at **\$2 each at all post offices from 8 April 2021**. Display of the special stamps on 8 April 2021 and the associated philatelic products on 14 April 2021 will be put up at the General Post Office, Tsim Sha Tsui Post Office, Tsuen Wan Post Office, Sha Tin Central Post Office and Tuen Mun Central Post Office. Advance orders for servicing self-provided covers will be accepted at 38 philatelic offices from **8 to 14 April 2021**.

Information about the sales arrangements is set out below:

Products	Unit Selling Price (HKD)	Sales Period	Maximum Purchase Quantity Per Queuing Customer on the First Two Days of Issue
(A) Products Available at all Post Offices			
First Day Cover	2	8 April to 21 July 2021	No restriction
Mint Stamps (a set of six stamps)	21.6	22 April to 21 July 2021	5 sheets of each denomination (viz. 125 stamps of each denomination)
Stamp Sheetlet (containing a \$10 stamp)	10		10 sheets
Mini-pane (containing 2 sets of stamps)	43.2		5 panes
Collector Card (containing a set of six self-adhesive stamps)	45		5 cards
Presentation Pack (containing a set of six stamps and a \$10 Stamp Sheetlet)	50		5 packs

 (6_Eng/2021 – 29/3)¹

PHILATELIC LINK

Products	Unit Selling Price (HKD)	Sales Period	Maximum Purchase Quantity Per Queuing Customer on the First Two Days of Issue
(B) Product Available at 38 Philatelic Offices only			
Serviced First Day Cover affixed with a set of six stamps (date-stamped with associated special postmark)	26.1	22 April to 21 July 2021	5 covers
Serviced First Day Cover affixed with a set of six stamps (date-stamped with associated colour postmark)	26.1		5 covers
Serviced First Day Cover affixed with a \$10 Stamp Sheetlet (date-stamped with associated special postmark)	14.5		5 covers
Serviced First Day Cover affixed with a \$10 Stamp Sheetlet (date-stamped with associated colour postmark)	14.5		5 covers

- Remarks: (1) The above philatelic products **are included** in “2021 Advance Order Service”.
- (2) For overseas and Mainland customers, please ensure that there is sufficient balance in your account to settle the payment of your advance order. Otherwise, your order will be processed only when stock is still available after all orders with payments settled have been fulfilled.
- (3) The above philatelic products are limited in supply and will be available for sale for three months while stock lasts.
- (4) All images are for reference only.
- (5) Stamp products should be kept in cool and dry places and avoid placing them under direct sunlight or in hot environment.
- (6) The above philatelic products (except First Day Cover) will be put on sale at "ShopThruPost" (Shophtrupost.hongkongpost.hk) starting from 8:00 a.m. on 22 April 2021 (Thursday).

Date-stamping Arrangements

A hand-back date-stamping service using the office steel date-stamp and the special postmark will be provided on **22 April 2021** at all post offices for official/private-made covers bearing the first day of issue indication and a local address. All philatelic offices will also provide hand-back date-stamping service using the “Philatelic Bureau” pictorial postmark and the philatelic office pictorial postmark. The GPO-1 date-stamp will only be available at the General Post Office.

Special Arrangements under the Epidemic

For the stamp issue to be launched throughout the period of the pandemic, Hongkong Post will implement a special sales arrangement to achieve social distancing and prevent crowds. These arrangements, which shall be applicable to this issue, include:

- 1) Ordering of stamp products on the website;
- 2) Collection points to be set up at all post offices on the issue date of the special stamps to facilitate the submission of order forms as well as first day covers requesting hand-back date-stamping service.

The above arrangements are subject to change in view of the development of the epidemic situation. For enquiry on the latest updates on the arrangements, please visit the Hongkong Post Stamps website at stamps.hongkongpost.hk, or call the Philatelic Bureau hotline at 2785 5711.

Stamp Data

Design:	Colin TILLYER
Illustration:	Roxy LAU
Printer:	Joh. Enschedé Stamps B.V., the Netherlands
Process:	Lithography plus 3D embossing
Stamp Size:	Stamp Sheet - 28 mm × 45 mm \$10 Stamp Sheetlet - 42 mm × 70 mm
Stamp Layout:	Stamp Sheet - Pane of 25 stamps
Stamp Sheetlet Size:	135 mm × 85 mm
Mini-pane Size:	193 mm × 202 mm
Collector Card Size:	95 mm × 185 mm
Perforation:	Stamp Sheet & Mini-pane – 13.5 × 13.25 (one elliptical perforation on each vertical) \$10 Stamp Sheetlet – 14.25 × 13.75 (one elliptical perforation on each vertical)
Paper:	Stamp Sheet, \$10 Stamp Sheetlet & Mini-pane - Paper with security fibres Collector Card - Self-adhesive stamp paper with security fibres
Date of Issue:	22 April 2021

PHILATELIC LINK



HONG KONG
22.4.2021

Special Postmark



HONG KONG
22.4.2021

Colour Postmark



\$10 Stamp Sheetlet



Mini-pane



Collector Card (Front)



Collector Card (Back)



Presentation Pack (Cover)

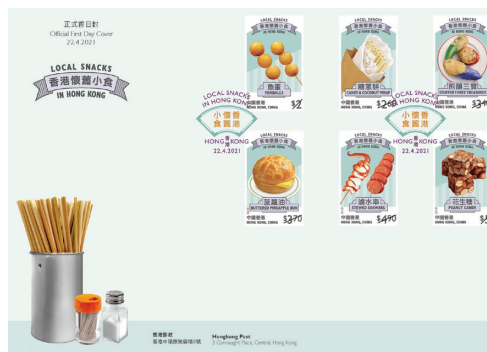


Presentation Pack (Inside)

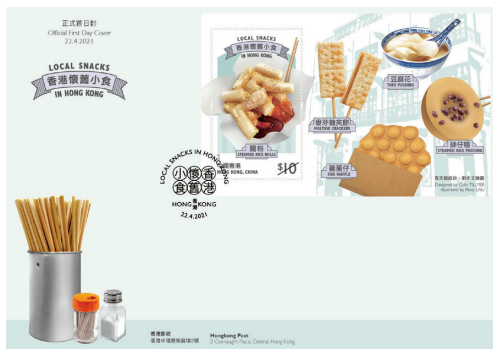
PHILATELIC LINK



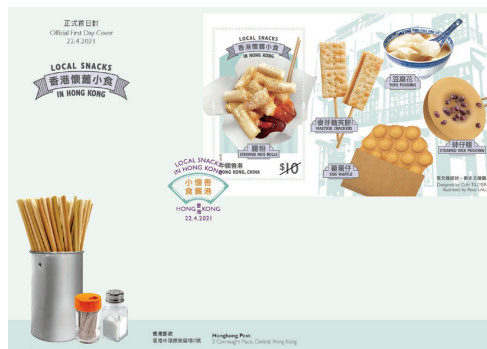
Serviced First Day Cover affixed with a set of six stamps and date-stamped with the special postmark



Serviced First Day Cover affixed with a set of six stamps and date-stamped with the colour postmark



Serviced First Day Cover affixed with a \$10 Stamp Sheetlet and date-stamped with the special postmark



Serviced First Day Cover affixed with a \$10 Stamp Sheetlet and date-stamped with the colour postmark

All images are for reference only.

Stamps Products Sales Report

(I) Three Months Sales Report

Quantity sold (In thousand pieces)

Date of Issue	Special Stamp Issue	\$2.00 Stamp	\$3.70 Stamp	\$4.90 Stamp	\$5.00 Stamp	Souvenir Sheet	Presentation Pack	Postage Prepaid Christmas Cards
4.12.2020	Christmas Stamps IV	307	126	122	126	132	8	9

(II) First Day Sales Report

1. Quantity sold (In thousand pieces)

Date of Issue	Special Stamp Issue	\$2.00 Stamp	\$3.70 Stamp	\$4.90 Stamp	\$5.00 Stamp	\$10 Stamp Sheetlet	\$20 Stamp Sheetlet	Mini-pane	Presentation Pack
23.2.2021	Intangible Cultural Heritage - Dragon and Lion Dance	205	103	101	107	109	52	23	9

2. Total revenue

23.2.2021	Intangible Cultural Heritage - Dragon and Lion Dance	HK\$6.04 million
-----------	--	------------------

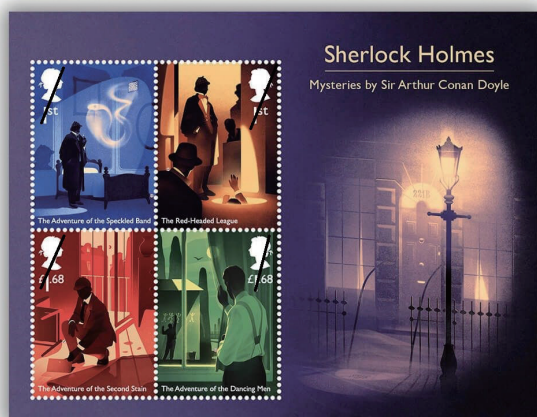
The above reports are also available at the Hongkong Post Stamps website stamps.hongkongpost.hk.

Macao and overseas philatelic products on sale at *ShopThruPost* from 31 March 2021

Hand-picked philatelic products issued by Macao and overseas postal administrations of Australia, Canada, Isle of Man, Liechtenstein, New Zealand and the United Kingdom will be **available for sale at Hongkong Post online shopping mall ShopThruPost (shopthrupost.hongkongpost.hk) starting from 8:00 am on March 31.**

One of the highlights is the presentation pack featuring the beloved fictional hero Sherlock Holmes issued by Royal Mail, which comes with a stunning compilation of stories, images as well as stamps depicting the six key characters from the TV series, *Sherlock*. Adding extra touch to excite fans of the mystery series, hidden details from the episode storylines will be revealed when UV light is shone over the stamps. It also contains a four-stamp souvenir sheet with stunning illustrations of four classic Sherlock Holmes mysteries. An up-close look into these fascinating stamps will certainly inspire collectors to read again the original stories and novels.

Royal Mail: Sherlock



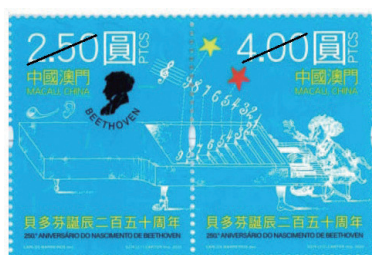
Souvenir Sheet (BR457)
\$70.00



Presentation Pack (BR458)
\$185.00

Also recommended are the commemorative stamp products issued respectively by the Macao Post and Telecommunications and Liechtensteinische Post AG celebrating the 250th anniversary of the birth of Ludwig van Beethoven, who was acclaimed as one of the most influential composers of all time and a predominant musical figure in the transitional period between the Classical and Romantic eras. Beethoven's legacy lives on to inspire many musical creations around the world even today.

Macao Post and Telecommunications: 250th Anniversary of the Birth of Beethoven



Set of 2 Stamps (MA664)
\$10.00



Stamp Sheetlet (MA665)
\$20.00

PHILATELIC LINK

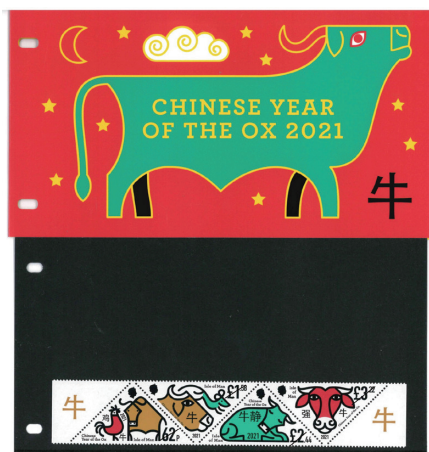
Liechtensteinische Post AG: 250th Birthday of Ludwig van Beethoven



Datestamped First Day Cover with Stamp Sheetlet (LI155)
\$75.00

Festive stamps have been an all-time favourite among keen philatelists, hence, Hongkong Post is offering Christmas and Year of the Ox stamp products issued by various postal administrations in the selection, where vibrant colours and vivid graphics are used to convey a mood of festivities from around the world. For those who are fond of collecting stamps of special shapes, do not miss out on the first-ever triangular stamps issued by the Isle of Man Post Office, which depicts the placidity and sturdiness of ox, and portrays the folklore about the race between creatures for a place in the twelve Chinese zodiac signs.

Isle of Man Post Office: Chinese Year of the Ox



Presentation Pack (IM179)
\$115.00



Datestamped First Day Cover with Stamp Set (IM180)
\$115.00

Liechtensteinische Post AG: Chinese Signs of the Zodiac: Ox



Mini-pane (LI156)
\$85.00



Datestamped First Day Cover with Stamp Set (LI157)
\$35.00

PHILATELIC LINK

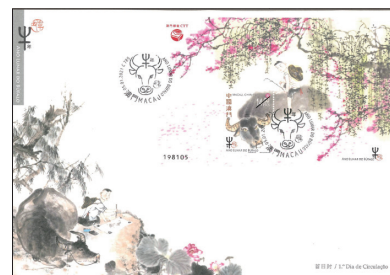
Macao Post and Telecommunications: Lunar Year of the Ox



Set of 4 Stamps (MA666)
\$20.00



Stamp Sheetlet (MA667)
\$20.00



Datestamped First Day Cover
with Stamp Sheetlet (MA668)
\$25.00

Lunar Year of the Ox (Label Stamp)



Set of 4 Stamps (MA669)
\$20.00

Australia Post: Year of the Ox 2021

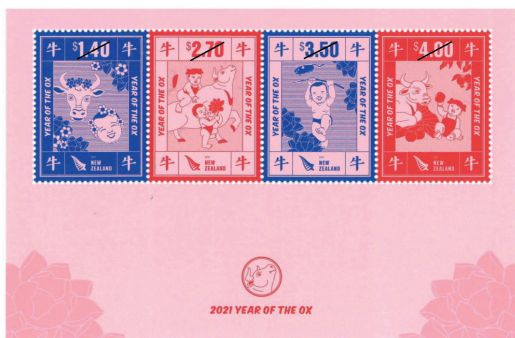


Souvenir Sheet (AU495)
\$50.00

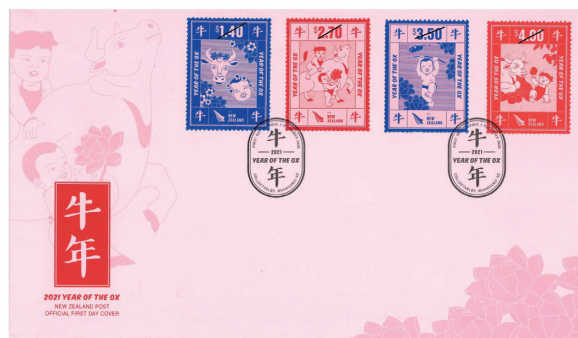


Datestamped First Day Cover
with Stamp Set (AU496)
\$55.00

New Zealand Post: 2021 Year of the Ox



Souvenir Sheet (NZ321)
\$80.00



Datestamped First Day Cover
with Stamp Set (NZ322)
\$85.00

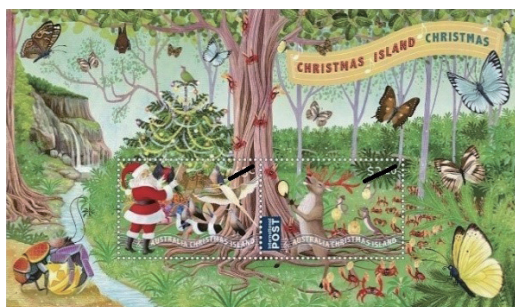
PHILATELIC LINK

Royal Mail: Year of the Ox



Mini-pane (BR461)
\$240.00

Australia Post: Christmas Island Christmas 2020



Souvenir Sheet (AU497)
\$25.00



Datestamped First Day Cover
with Stamp Set (AU498)
\$25.00

Christmas 2020



Souvenir Sheet (AU499)
\$25.00



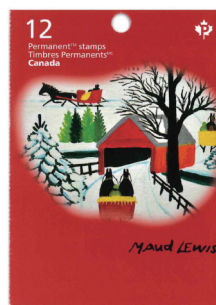
Datestamped First Day Cover
with Stamp Set (AU500)
\$50.00

PHILATELIC LINK

Canada Post: Christmas 2020

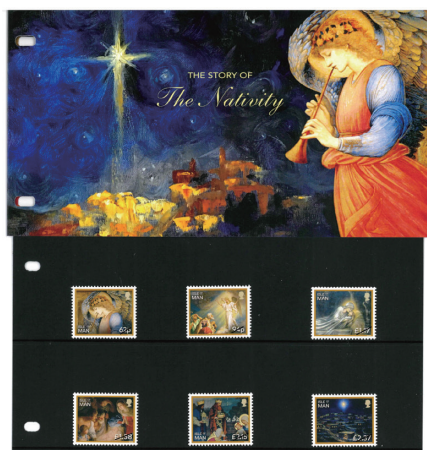


Souvenir Sheet (CA278)
\$40.00

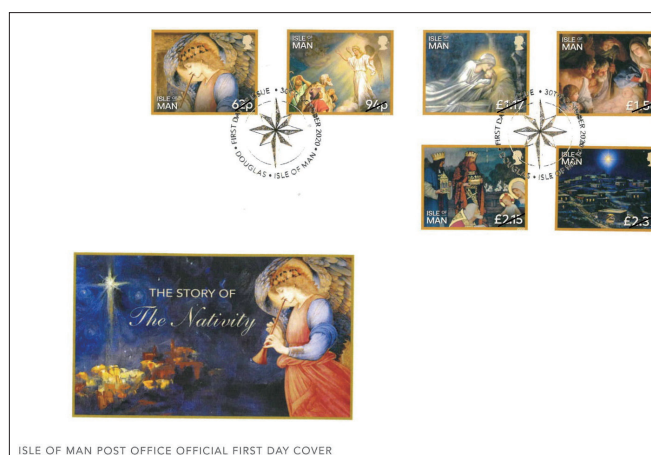


Booklet of 12 stamps (CA279)
\$85.00

Isle of Man Post Office: The Story of the Nativity

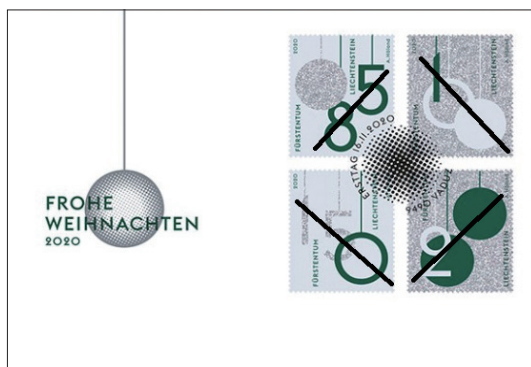


Presentation Pack (IM177)
\$130.00



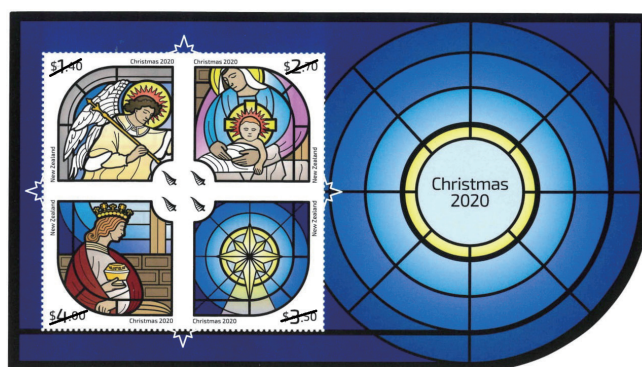
Datestamped First Day Cover with Stamp Set (IM178)
\$125.00

Liechtensteinische Post AG: Christmas



Datestamped First Day Cover
with Stamp Set (LI154)
\$65.00

New Zealand Post: Christmas 2020



Souvenir Sheet (NZ320)
\$80.00

PHILATELIC LINK

Royal Mail: Christmas 2020

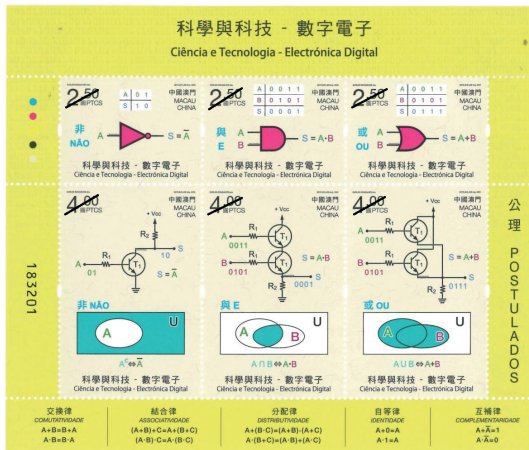


Souvenir Sheet (BR459)
\$160.00

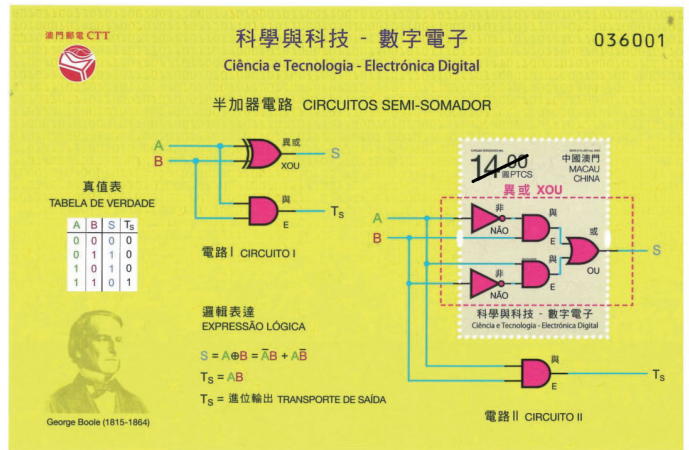


Datestamped First Day Cover
with Stamp Set (BR460)
\$195.00

Macao Post and Telecommunications: Science and Technology – Digital Electronics



Souvenir Sheet (MA662)
\$25.00



Stamp Sheetlet (MA663)
\$20.00

120th Anniversary of the Printing Bureau



Set of 2 Stamps (MA670)
\$10.00



Stamp Sheetlet (MA671)
\$20.00

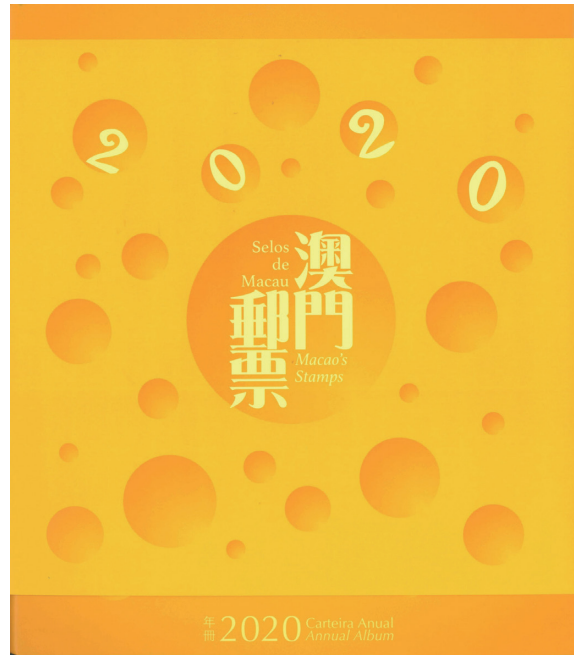
PHILATELIC LINK

Mainland Scenery VIII

Annual Album 2020



Stamp Sheetlet (MA672)
\$20.00



Annual Album (MA673)
\$700.00

Australia Post:

Wildlife Recovery: Stamp Collecting Month 2020



Souvenir Sheet (AU501)
\$50.00

Royal Mail:

Palace of Westminster



Souvenir Sheet (BR456)
\$65.00

PHILATELIC LINK

Details and selling price of the philatelic products as well as the sales quota are as follows:

Issue Name	Products and Product Code	Unit Price (HK\$)	Maximum Purchase Quantity	Sales Quantity
Macao Post and Telecommunications				
Science and Technology – Digital Electronics	Digital electronics, in its physical and mathematical components, forms the basis of the creation of immeasurable electronic devices that are currently part of our lives, such as: the Internet, computers, tablets, mobile phones, robots, etc. In the mathematical component, it is Boolean algebra which constitutes its fundamental theoretical tool, thus allowing its development. The Boolean algebra genesis lies in antiquity among sophists and philosophers such as Parmenides, Plato and Aristotle.			
	Souvenir Sheet (MA662)	25.00	5 sheets	800 sheets
	Stamp Sheetlet (MA663)	20.00	5 sheets	800 sheets
250 th Anniversary of the Birth of Beethoven	Ludwig van Beethoven, born in Bonn, Germany, on December 16, 1770 was an accomplished composer and pianist during the European classicism period and one of the representatives of the Vienna classic period. Along with Haydn and Mozart, he was named as one of the “Three Great Masters of Vienna”. Beethoven lived through the critical era between classical and romantic music. He not only accomplished great achievements in classical music but also paved the path for romantic music. His works had a big influence on the style of later composers and played an important role in the development of world music, rendering him revered as the “Sage of Music.”.			
	Set of 2 Stamps (MA664)	10.00	5 sets	1,200 sets
	Stamp Sheetlet (MA665)	20.00	5 sheets	1,200 sheets
Lunar Year of the Ox	People just witness out the old year of the Rat and welcome in the new year of the Ox. At the beginning of the Chinese Lunar New Year of the Ox, the topic of “Year” is naturally “Niu”. As early as the primitive period, our ancestors had established a close relationship with ox, which often appeared in the ancient legends of the empire building and the territory expanding.			
	Set of 4 Stamps (MA666)	20.00	5 sets	1,700 sets
	Stamp Sheetlet (MA667)	20.00	5 sheets	1,500 sheets
	Datestamped First Day Cover with Stamp Sheetlet (MA668)	25.00	5 covers	400 covers
Lunar Year of the Ox (Label Stamp)	The Chinese nation has its roots in the farming culture, which has gradually deepened people’s thoughts with oxen, recognising their excellent qualities such as diligence, simplicity, honesty, loyalty, hard work and all without complaining. “Bow your head and be willing like an ox” is the spiritual embodiment of tens of thousands of diligent compatriots.			
	Set of 4 Stamps (MA669)	20.00	5 sets	450 sets
120 th Anniversary of the Printing Bureau	The Printing Bureau is one of the public services of the Macao Special Administrative Region (MSAR) and has a long history. Founded on November 16, 1900, the Bureau came into operation on January 1, 1901. It was originally known as the “National Press”, renamed later on May 18, 1985 as “Macao Official Press”, and the current name “Printing Bureau” was adopted after the reunification.			
	Set of 2 Stamps (MA670)	10.00	5 sets	800 sets
	Stamp Sheetlet (MA671)	20.00	5 sheets	800 sheets
Mainland Scenery VIII	Hukou Waterfall is located in the middle section of the Yellow River Basin and the southern section of the Jin-Shaan Grand Canyon. It is adjacent to Ji County of Shanxi Province in the east and Yichuan County of Shaanxi Province in the west, which is also a common tourist resource shared by both provinces. Hukou Waterfall is one of the three major waterfalls in China, along with the Detian Waterfall in China-Vietnam border and Huangguoshu Waterfall in Guizhou Province.			
	Stamp Sheetlet (MA672)	20.00	5 sheets	1,300 sheets
Annual Album 2020	Annual Album (MA673)	700.00	2 books	150 books
Australia Post				
Year of the Ox 2021	Lunar New Year, also called the Spring Festival in China, is the most important of the traditional festivals celebrated by Asian cultures throughout the world. It is a time to complete unfinished business to begin the New Year with a clean slate.			
	Souvenir Sheet (AU495)	50.00	5 sheets	400 sheets
	Datestamped First Day Cover with Stamp Set (AU496)	55.00	5 covers	200 covers
Christmas Island Christmas 2020	Australia Post has produced stamps for Christmas Island since 1993. This light-hearted Christmas stamp series features Santa Claus interacting with various personified island fauna.			
	Souvenir Sheet (AU497)	25.00	5 sheets	400 sheets
	Datestamped First Day Cover with Stamp Set (AU498)	25.00	5 covers	200 covers

PHILATELIC LINK

Issue Name	Products and Product Code	Unit Price (HK\$)	Maximum Purchase Quantity	Sales Quantity
Christmas 2020	Australia Post's annual Christmas stamp issue celebrates the Christmas holiday, highlighting both traditional and secular themes. This year's traditional Christmas stamps feature the art of Leopoldine Mimovich, OAM (1920–2019). A celebrated sculptor and artist, Mimovich received many honours, including the Medal of the Order of Australia (OAM) in 1985 for her service to sculpture.			
	Souvenir Sheet (AU499)	25.00	5 sheets	300 sheets
	Datestamped First Day Cover with Stamp Set (AU500)	50.00	5 covers	200 covers
Wildlife Recovery: Stamp Collecting Month 2020	From August 2019, the impact of climate change was on show in Australia. A long season of intense and extensive bushfires began to ravage Queensland and New South Wales, and then fires spread to the Australian Capital Territory, Victoria and South Australia. Eventually, every state and territory had some level of bushfire impact. Some 12 million hectares burned across town, rural and remote areas, including in bushland and protected areas. The stamps in this issue show six animal species that the Australian Government's Wildlife and Threatened Species Bushfire Recovery Expert Panel identified for immediate conservation management, in the wake of the fires.			
	Souvenir Sheet (AU501)	50.00	5 sheets	500 sheets
Canada Post				
Christmas 2020	Canada Post made use of the work of the acclaimed folk artist Maud Lewis for stamp production. Featuring her seasonal paintings, the stamps depict scenes in a bright and joyful palette of colours against the snowy white background with a forthright and childlike style.			
	Souvenir Sheet (CA278)	40.00	5 sheets	500 sheets
	Booklet of 12 stamps (CA279)	85.00	5 booklets	500 booklets
Isle of Man Post Office				
The Story of the Nativity	Isle of Man Post Office Christmas stamps, issued on 30 October 2020, feature scenes and artworks inspired by the story of the Nativity. 2020 marks the 40th anniversary of the consecration of the Cathedral Isle of Man. It is the cathedral church of the Church of England Diocese of Sodor and Man and was made a cathedral by Act of Tynwald in 1980.			
	Presentation Pack (IM177)	130.00	2 packs	100 packs
	Datestamped First Day Cover with Stamp Set (IM178)	125.00	5 covers	100 covers
Chinese Year of the Ox	The Chinese New Year, February 12, 2021, will see the beginning of one of the most prominently celebrated festivals on the planet with the Lunar animal represented, the Ox, perceived as diligent, persistent and honest. This wonderful four stamp collection continues the Lunar New Year issue programme, including the previous three years, the Year of the Pig, the Year of the Dog and the Year of the Rat.			
	Presentation Pack (IM179)	115.00	2 packs	350 packs
	Datestamped First Day Cover with Stamp Set (IM180)	115.00	5 covers	200 covers
Liechtensteinische Post AG				
Christmas	The self-adhesive special stamps of 2020's Christmas issue are presented in a glittering and shimmering fashion. They were designed by a prize winner of the design competition held abroad among Liechtenstein artists.			
	Datestamped First Day Cover with Stamp Set (LI154)	65.00	5 covers	100 covers
250 th Birthday of Ludwig van Beethoven	With the souvenir sheet "With Friends at the Piano", Philately Liechtenstein is commemorating the 250th birthday of the renowned composer Ludwig van Beethoven. The souvenir sheet, which was produced in steel engraving, shows the artist sitting at the piano surrounded by friends.			
	Datestamped First Day Cover with Stamp Sheetlet (LI155)	75.00	5 covers	100 covers
Chinese Signs of the Zodiac: Ox	For the tenth time in a row, Philately Liechtenstein is issuing a stamp at the end of the year with a motif from the Chinese zodiac, of which the sign is ox. The Chinese New Year is celebrated on the first new moon between January 21 and February 21 and is the most important Chinese holiday. Traditionally it is celebrated with many ancient customs.			
	Mini-pane (LI156)	85.00	5 sheets	200 sheets
	Datestamped First Day Cover with Stamp Set (LI157)	35.00	5 covers	200 covers

PHILATELIC LINK

Issue Name	Products and Product Code	Unit Price (HK\$)	Maximum Purchase Quantity	Sales Quantity
New Zealand Post				
Christmas 2020	The Christmas stamps for 2020 tell the Nativity story through four beautiful stained-glass window inspired illustrations, with a magnificent twist. For the first time ever, New Zealand Post has created an interactive experience with stamps. The viewer is guided through the story as the stamps highlight the annunciation, the birth of Jesus, the star of Bethlehem and the wise men's gifts.			
	Souvenir Sheet (NZ320)	80.00	5 sheets	200 sheets
2021 Year of the Ox	To Chinese, the year of their birth is significant in shaping the trajectory of their lives. Those born in the year of the Ox are thought to be dependable, diligent and determined. Their other positive traits are being hardworking, honest and healthy.			
	Souvenir Sheet (NZ321)	80.00	5 sheets	400 sheets
	Datestamped First Day Cover with Stamp Set (NZ322)	85.00	5 covers	100 covers
Royal Mail				
Palace of Westminster	A collection of stamps and souvenirs commemorating 150 years since the completion of the rebuilt Palace of Westminster in the aftermath of the damaging fire of 1834.			
	Souvenir Sheet (BR456)	65.00	5 sheets	500 sheets
Sherlock	Royal Mail is celebrating the world famous detective on the 10th anniversary of the modern-day adaptation of the Holmes mysteries. The issue features a stunning compilation of stamps, stories and images celebrating a legendary crime-cracking character.			
	Souvenir Sheet (BR457)	70.00	5 sheets	1,000 sheets
	Presentation Pack (BR458)	185.00	2 packs	300 packs
Christmas 2020	The eight Christmas 2020 Special Stamps showcase the magical and meaningful stained glass art adorning windows of Anglican churches across the country.			
	Souvenir Sheet (BR459)	160.00	5 sheets	400 sheets
	Datestamped First Day Cover with Stamp Set (BR460)	195.00	5 covers	200 covers
Year of the Ox	The Lunar New Year of the Ox Generic Sheet with 20 First Class Smilers stamps features fireworks images. Showcasing the Chinese New Year celebrations in named cities across the United Kingdom, the labels are designed by hat-trick design and feature paper cut-outs both on the bright red background of the sheet and the labels representing the five elements of Metal, Water, Wood, Fire and Earth.			
	Mini-pane (BR461)	240.00	5 sheets	150 sheets

- Remarks : (1) The Annual Album as shown above is available for sale for one year while stock lasts; other Macao and overseas philatelic products are available for sale for six months while stock lasts. The sales quotas are still applicable during the sales period.
(2) Sales arrangements, selling price and sales quota set out in "Philatelic Link" are subject to change without prior notice.
(3) All images are for reference only.
(4) Stamp products should be kept in cool and dry places and avoid placing them under direct sunlight or in hot environment.
(5) The market value of stamp products can go down as well as up. Please consider your needs before placing any orders.

Follow	 	郵票 • 郵趣 @Hong Kong Post Stamps	and stay tuned with the latest philatelic news!
<p>Subscribe to Receive the Latest Philatelic Link Want to receive as soon as possible the latest information about new stamp products and services? Please visit Hongkong Post Stamps website http://stamps.hongkongpost.hk/stamp/detail2/9b31bab9-2864-4c93-87ba-186dda7c0f4a or scan the QR code and subscribe to receive the e-copy of Philatelic Link.</p>			