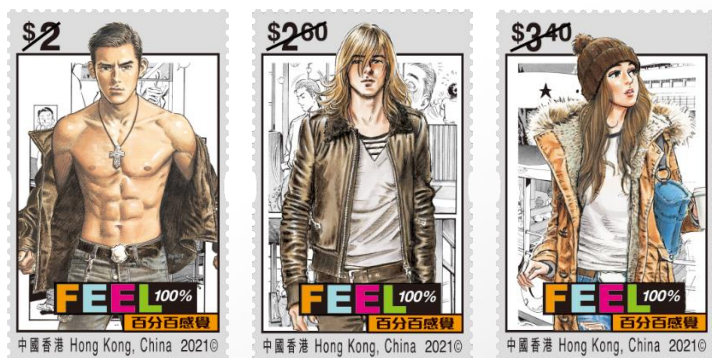


Philatelic LINK

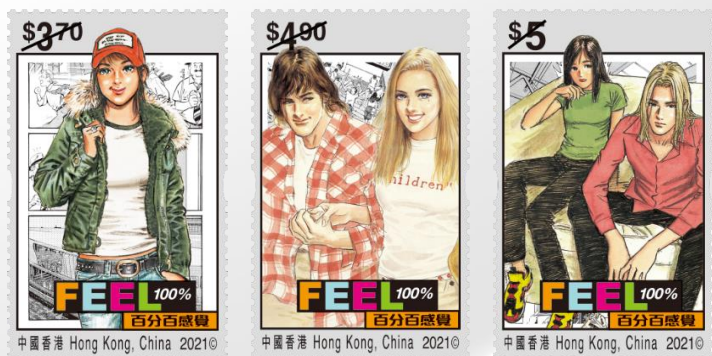
Hongkong Post Stamps
郵票策劃及拓展處

電話 Tel.: 2785 5711
傳真 Fax.: 2191 9296
香港郵政總局郵政信箱 11968 號
P.O. Box 11968
General Post Office, Hong Kong

Classic comic "Feel 100%" recreated on stamps



\$10 Stamp Sheetlet



\$20 Stamp Sheetlet

Mint Stamps

Date of issue: 16 September 2021 (Thursday).



Scan to Learn More!

Sales Arrangements

Official First Day Covers will be put on sale **at all post offices** from **2 September 2021**. Display of the special stamps and associated philatelic products will be put up at General Post Office (GPO), Tsim Sha Tsui Post Office (TST), Tsuen Wan Post Office (TSW), Sha Tin Central Post Office (SCL) and Tuen Mun Central Post Office from 2 September 2021; and the framed souvenir from 13 September 2021. Advance orders for servicing self-provided covers will be accepted at 38 philatelic offices from **2 to 8 September 2021**.

(17_Eng/2021-2/9)¹

香港郵政互聯網地址
Hongkong Post Website www.hongkongpost.hk

郵票策劃及拓展處互聯網地址
Hongkong Post Stamps Website stamps.hongkongpost.hk

郵購網地址
ShopThruPost Website ShopThruPost.hongkongpost.hk

38間集郵局：港島區—郵政總局、香港仔、數碼港、軒尼詩道、英皇道、山頂、筲箕灣、上環、太古城、灣仔 ■ 九龍區—長沙灣、機利士路、加連威老道、紅磡灣、九龍中央、九龍城、廣華街、觀塘、旺角、深水埗、土瓜灣、將軍澳、尖沙咀 ■ 新界區—蝴蝶、長發、顯徑、馬鞍山、西貢、沙田中央、石湖墟、大埔、天耀、荃灣、屯門中央、沙田第一城、元朗 ■ 離島區—機場、長洲

38 Philatelic Offices: HONG KONG ISLAND—General Post Office, Aberdeen, Cyberport, Hennessy Road, King's Road, Peak, Shau Kei Wan, Sheung Wan, Tai Koo Shing, Wan Chai ■ KOWLOON—Cheung Sha Wan, Gillies Avenue, Granville Road, Hung Hom Bay, Kowloon Central, Kowloon City, Kwong Wa Street, Kwun Tong, Mongkok, Sham Shui Po, To Kwa Wan, Tsim Sha Tsui ■ NEW TERRITORIES—Butterfly, Cheung Fat, Hin Keng, Ma On Shan, Sai Kung, Sha Tin Central, Shek Wu Hui, Tai Po, Tin Yiu, Tsuen Wan, Tuen Mun Central, Tseung Kwan O, City One Shatin, Yuen Long ■ OUTLYING ISLANDS—Airport, Cheung Chau

PHILATELIC LINK

Information about the sales arrangements is set out below:

Products	Unit Selling Price (HKD)	Sales Period (available until stocks last)	Maximum Purchase Quantity Per Queuing Customer on the First Day of Issue and the following day
(A) Products Available at all Post Offices			
First Day Cover	2	2 September to 15 December 2021	No restriction
Mint Stamps (a set of six denominations)	21.6	16 September to 15 December 2021	2 sheets of each denomination (viz. 50 pieces of each denomination)
Mini-Stamp Sheets (mini-stamp sheets in six different denominations, each sheet containing four mint stamps of the same denomination)	8 10.4 13.6 14.8 19.6 20.0		5 sheets of each denomination
Stamp Sheetlet (containing a \$10 mint stamp)	10		5 sheets
Stamp Sheetlet (sand varnish and spot varnish, containing a \$20 mint stamp)	20		5 sheets
Presentation Pack (containing a set of mint stamps in six denominations, a \$10 Stamp Sheetlet and a \$20 Stamp Sheetlet)	75		2 packs
(B) Products Available at 38 Philatelic Offices only			
Serviced First Day Cover affixed with a set of mint stamps in six denominations (date-stamped with special postmark)	26.1	16 September to 15 December 2021	2 covers
Serviced First Day Cover affixed with a \$10 Stamp Sheetlet (date-stamped with special postmark)	14.5		2 covers
Serviced First Day Cover affixed with a \$20 Stamp Sheetlet (date-stamped with special postmark)	24.5		2 covers
Postage Prepaid Picture Cards (Air Mail) (containing a set of eight cards)	80		2 sets
(C) Products Available at GPO, TST, TSW and SCL only			
Framed Souvenir (containing a set of mint stamps in six denominations, a \$10 Stamp Sheetlet and a \$20 Stamp Sheetlet)	150	16 September to 15 December 2021	2 pieces

PHILATELIC LINK

- Remarks: (1) The above philatelic products **are included** in the “2021 Advance Order Service (July to December)”.
- (2) All images are for reference only.
- (3) The above philatelic products (except First Day Cover) will be put on sale at "ShopThruPost" (shopthrupost.hongkongpost.hk) starting from 8:00 a.m. on 16 September 2021 (Thursday). The First Day Cover will be put on sale starting from 8:00 a.m. on 2 September 2021



**Scan and
Order Now**

Date-stamping Arrangements

A hand-back date-stamping service with options of the office steel date-stamp or the special postmark will be provided on **16 September 2021** at all post offices for official First Day Cover/privately-made covers bearing the first day of issue indication and a local address. All philatelic offices will also provide choices of “Philatelic Bureau” pictorial postmark and its respective philatelic office pictorial postmark. The GPO-1 date-stamp impression will only be available at the General Post Office.

Special Arrangements

For the stamp issue to be launched while the pandemic of COVID-19 prevails, Hongkong Post will implement a special sales arrangement to achieve social distancing and prevent crowds. The arrangements for this issue include:

- 1) Pre-ordering of stamp products via *ShopThruPost* website (shopthrupost.hongkongpost.hk) until 8:00 am of 16 September 2021 and via physical application form by 15 September 2021.
- 2) Collection points to be set up at all post offices on 16 September 2021 for submission of official First Day Cover/ privately-made covers requesting hand-back date-stamping service.

The above arrangements are subject to change in view of the development of the pandemic. For enquiry on the latest updates on the arrangements, please visit the Hongkong Post Stamps website at stamps.hongkongpost.hk, or call the Philatelic Bureau hotline at 2785 5711.

Stamps Products Sales Report

Sales Figures as of the First Day of Sales:

1. Quantity sold (In thousand pieces)

Date of Issue	Special Stamp Issue	\$2.00 Stamp	\$3.70 Stamp	\$4.90 Stamp	\$5.00 Stamp	Stamp Sheetlet	Presentation Pack
1.7.2021	The 100th Anniversary of the Founding of the Communist Party of China	367	287	281	282	309	30

2. Total revenue

1.7.2021	The 100th Anniversary of the Founding of the Communist Party of China	HK\$10.70 million
----------	---	-------------------



Please scan the QR code to check the report



Postal Gallery features “World Heritage and Scenery in China”

A set of new exhibits on “World Heritage and Scenery in China” will be displayed at the Postal Gallery located on Ground Floor, General Post Office from **1 September 2021 to 2 January 2022**. The current exhibition on “Olympic Games” will end on 31 August 2021.

This exhibition presents a retrospective of selected stamps and philatelic products issued by Hongkong Post previously viz.

- “World Heritage in China” (issue date: 25.11.2003)
- “The Complete Mainland Scenery Series Stamp Sheetlet” (issue date: 2.8.2011)
- “World Heritage in China Series No. 1: The Great Wall” (issue date: 27.9.2012)
- “World Heritage in China Series No. 2: The Old Town of Lijiang (issue date: 22.8.2013)
- “World Heritage in China Series No. 3: China Danxia” (issue date: 4.12.2014)
- “World Heritage in China Series No. 4: Honghe Hani Rice Terraces” (issue date: 18.6.2015)
- “World Heritage in China Series No. 5: The Grand Canal” (issue date: 10.5.2016)
- “World Heritage in China Series No. 6: Kaiping Diaolou and Villages” (issue date: 16.2.2017)
- “World Heritage in China Series No. 7: Temple of Heaven” (issue date: 10.8.2018)
- “World Heritage in China Series No. 8: Zuojiang Huashan Rock Art Cultural Landscape” (issue date: 13.8.2019)
- “World Heritage in China Series No.9: Qinghai Hoh Xil” (issue date: 23.6.2020).

It also contains running sheets, stamp sheetlets and associated philatelic products of the special stamp issue of “World Heritage in China Series No. 10: South China Karst” and “The Complete World Heritage in China Series Stamp Sheetlet” to be released on 12 October 2021.

Follow   郵票 · 郵趣@Hongkong Post Stamps and stay tuned with the latest philatelic news!

Subscribe to Receive the Latest Philatelic Link

Want to receive as soon as possible the latest information about new stamp products and services? Please visit Hongkong Post Stamps website <http://stamps.hongkongpost.hk/stamp/detail2/9b31bab9-2864-4c93-87ba-186dda7c0f4a> or scan the QR code and subscribe to receive the e-copy of Philatelic Link.

